

CARPINO PLACE

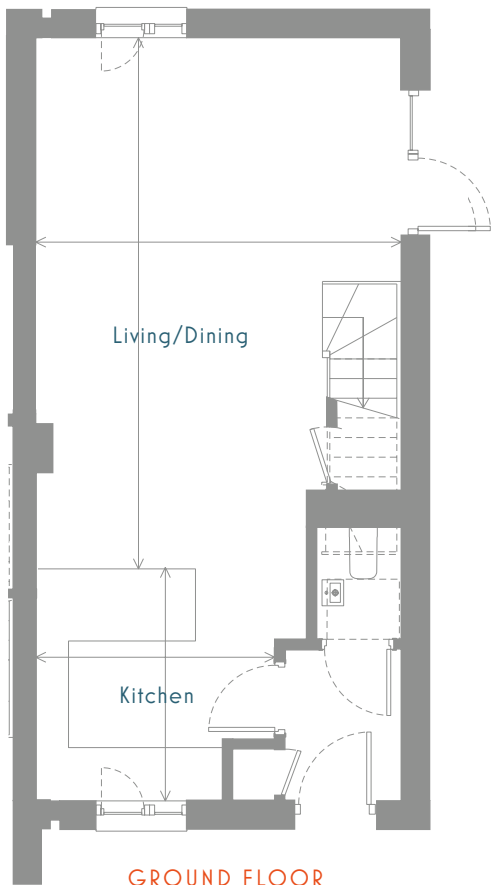
THE WROE



CGIs (computer generated images) are indicative only, external finishes and features may vary.
Please see a Sales Adviser for more information.
This CGI is not a true representation of the Wroe plot.

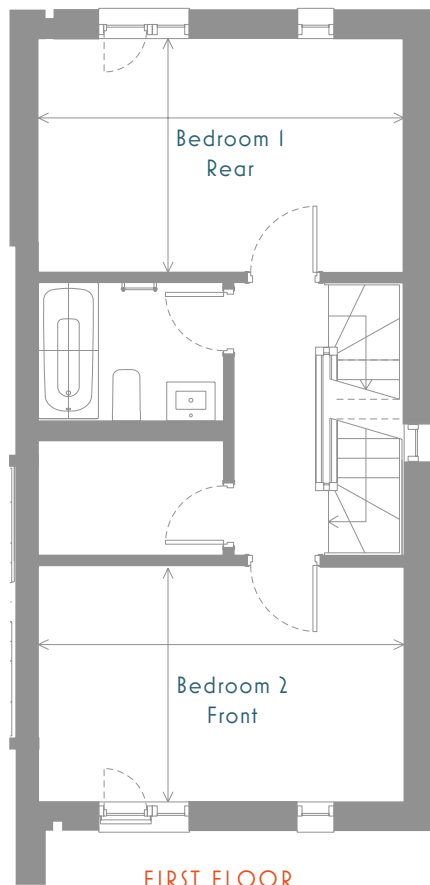
THE WROE

FOUR BEDROOM HOME WITH REAR GARDEN



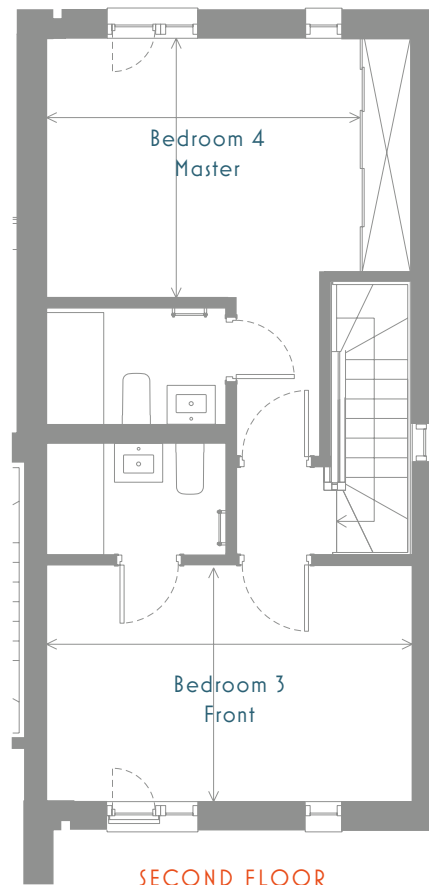
GROUND FLOOR

Ground floor to be sprinklered.



FIRST FLOOR

Staircase fixed window.



SECOND FLOOR

Staircase fixed window.
Automatic opening smoke vent (AOV) at head of stairs linked to fire detection in stair core.

INTERIORS

ROOM TYPE	SIZE (MM)	SIZE (IMP)
Living/Dining	6595 x 4500	21'7" x 14'9"
Kitchen	2865 x 3190	9'4" x 10'5"
Bedroom 1 Rear	2885 x 4500	9'5" x 14'9"
Bedroom 2 Front	2920 x 4500	9'6" x 14'9"
Bedroom 3 Front	2920 x 4500	9'6" x 14'9"
Bedroom 4 Master	3210 x 3855	10'6" x 12'7"

TOTAL INTERIOR AREA: 127 SQM / 1375 SQFT

REAR GARDEN

PLOTS	SIZE (SQM)	SIZE (SQFT)
5	44	476

Floor plans and layouts are approximate. Dimensions are taken from the architect's drawings, are given to the nearest 15cm (or equivalent in inches) and may differ in the as-built property. Maximum dimensions may include sloping ceilings, pillars, window bays, fitted wardrobes and other features. Floor plans and layouts should not therefore be used for purchasing items such as furniture or carpets. Computer generated images and artists' impressions are intended to give an artist's impression of the design, based on information available to the artist at the time the image is created. They are not intended to be an accurate description of any specific property, its location or the surrounding area. We do sometimes need to make changes to designs, finishes and features during the development and appearance may vary on completion. Images showing views are based on the site at the time the image is produced. Please note that landscapes change and a view which is unrestricted now may be restricted in the future. We do not control adjoining or surrounding land. External areas are indicative only.